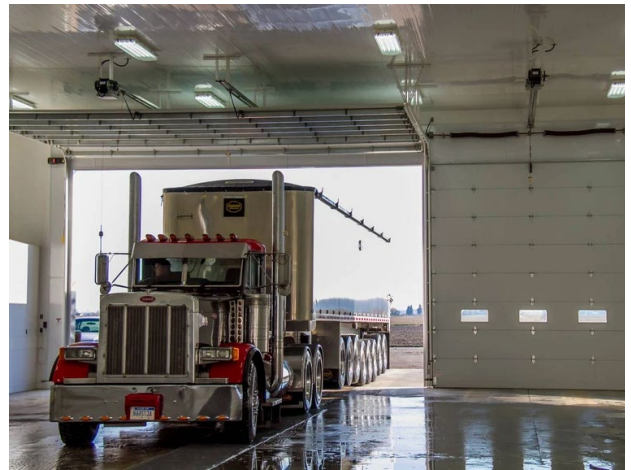


Taking care of your overhead doors & operators

A care guide for commercial maintenance, cost-savings, and safety best-practices.

Why you should care:

Your overhead doors are the most-used point of entry/exit on your building, and hold immense value in maintaining the operation of your business. In order to reduce long-term costs spent on emergency repairs and potential safety risks, it's important that you ensure your doors are regularly maintained.



Safety Inspections / Preventative Maintenance

- Overhead doors and operators have many high-use moving parts that require inspection and/or adjustment at least once/twice per year depending on their use.
- Springs, hardware, and operators require regular lubrication to ensure they can cycle safely.
- Throughout each year, there may be slight shifting in your building, and it's important to make sure your doors are adjusted and leveled to account for it.

To help determine an estimated frequency for maintenance, please refer to the chart below:

Cycles/day	PM Frequency
<5	12 months
5-10	6-12 months
10-25	3-6 months
25+	1-3 months



Phone: 204-326-4556
Toll-Free: 1-855-326-4556
ReimerDoors.com

Shipping:
21 Clearsprings Road East
Steinbach, MB R5G 1V2

Billing:
339 PTH 12 North
Steinbach, MB R5G 1T8

Steps you can take to help your doors live long, reliably, and safely:

- **Look for obstructions** before opening/closing your doors. Common obstructions include: tires leaning against door cables, pallets left in a door opening, broom handle leaning into door track, etc.
- **Take note of any noises** coming from your doors/operators that are out of the norm, and reach out via our website ReimerDoors.com/Service
- **If you're not the one regularly using your doors, check in with your team** and take note of anything they mention of concern. We've seen how regular check-ins have saved our customers tens of thousands of dollars by catching small issues that can be resolved quickly, before they become costly emergencies.
- **If your door doesn't open or close, don't try to force it up/down.** Give us a call and we'll help diagnose the issue and determine the best/safest way forward. Doors are very heavy, and trying to force one to open/close can result in further damage and safety concerns.
- **Inspect the weatherstripping and seals** along the sides/top/bottom of your door. Damaged/worn weatherstripping can cause tremendous heat loss, and even get caught in the panels/tracks and jam your door if not regularly inspected and replaced as needed.
- **Schedule annual/seasonal PM** with our team to ensure your doors are running safely and smoothly, and minor issues are caught & repaired before they become costly emergencies.

Thank you for trusting our team with your doors.