



C.H.I. [®]
OVERHEAD DOORS

The Door to Quality.™

 **6500** **SERIES**
COUNTER SHUTTERS



The 6500 Series

▶ PROVEN CAPABILITY FOR YOUR APPLICATION.

The 6500 series roll-up doors offer the best in security, flexibility, and appeal. Reduced sized slats provide for smoother operation and a more aesthetically pleasing appearance. End users and specifiers recognize the 6500 Series as state-of-the-art in design, fit, and finish, yet appreciate the simplicity and practicality that define the product.

Powder Coat

Select powder coat options from a palette of 188 colors. RAL numbers are provided for each color to ensure that your selection is consistent.



Hidden Fasteners

Two piece guide system incorporates fasteners concealed by the front guide for a clean appearance and easy installation.



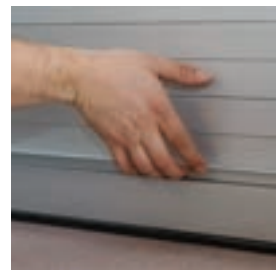
Tube Motor

Invisible tubular motor operation, awning crank operation, or wall mount motor is optional.



Integral Lift Rails

Included on the bottom bar provide full-width manual access and simplified lifting.



SPECIFICATIONS AND OPTIONS

MODELS

	6522	6544	6566
CURTAIN			
Flat slat	S	S	S
Exterior Skin			
22 gauge, Galvanized [G/W/P/U]	S	—	—
16 gauge, Extruded aluminum [C/P]	—	S	—
22 gauge, Stainless steel [#4]	—	—	S
BOTTOM BAR			
Extruded aluminum [C]	S	S	—
11 gauge, Stainless steel	—	—	S
Tubular stainless steel	—	—	O
LOCKS			
Thumb turn lock and handle	S ¹	S ¹	O ²
Keyed lock and handle	O	O	O ²
Best cylinder	O	O	O ²
Stainless steel slide locks	—	—	S
HOOD & HEADPLATE COVERS			
24 gauge, Galvanized [G/W/T/U/P]	S	—	—
20 gauge, Aluminum [C/P]	—	S	—
24 gauge, Stainless steel [#4]	—	—	S
GUIDES Fabricated from two pieces of extruded aluminum or formed stainless steel to create guide channel. Guide angles include curtain stops and flared guides.			
Extruded aluminum [C]	S	S	S
11 gauge, Stainless steel [#4]	—	—	O
OPERATION			
Manual Operation	S ³	S ³	S ³
Awning Crank	O ⁴	O ⁴	O ⁴
Tube Motor	O	O	O
Wall Mounted Motor	O	O	O

STANDARD DIMENSIONS Consult factory for larger sizes.

Width	14'4"	14'4"	14'4"
Height	8'4"	8'4"	8'4"

WARRANTY Manufacturer's standard 5-year from date of plant shipment against defects in materials or workmanship. Spring wire is warranted for one year. C.H.I.'s obligations are strictly limited to repair or replacement of defective parts and components during the warranty period.

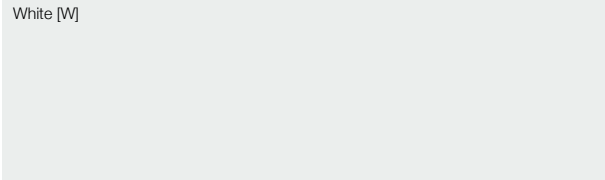
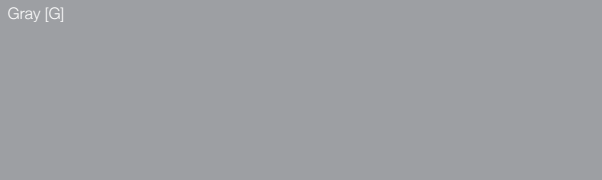
INSTALLATION C.H.I. Rolling Steel Doors shall be installed and adjusted according to C.H.I. assembly instructions by trained door service technicians.

S = Standard O = Optional — = Not available G = Gray W = White C = Clear anodized #4 = #4 polished P = Powder coat U = Unpainted Galvanized
 1 Standard for manual and awning crank operated doors. 2 Only available with tubular stainless steel bottom bar. 3 Standard for doors up to 10'4" wide. 4 Standard for door over 10'4" wide.

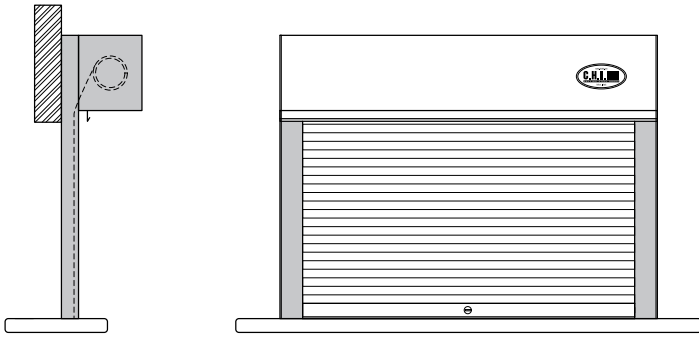
CURTAIN PROFILES



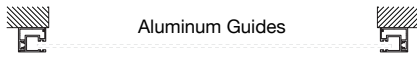
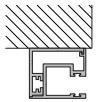
FINISHES



MOUNTING OPTIONS

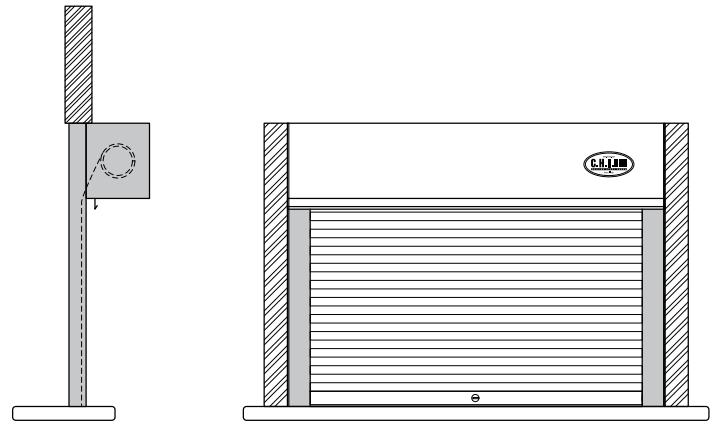


Face of Wall

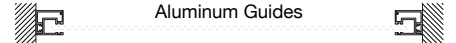
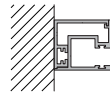


Aluminum Guides

Stainless Steel Guides [optional]



Between Jambs



Aluminum Guides

Stainless Steel Guides [optional]

Standard counter shutters are built to order to fit specific dimensions up to 14'4" wide, 8'4" high. Consult factory for larger doors not listed. If headroom is critical, consult factory to determine headroom requirements for your application. For downloadable specifications, please visit our website at www.chiohd.com or call our **AIA hotline** at, **800-590-0559**.

ASK YOUR DOOR PROFESSIONAL AT:



www.chiohd.com